

January 2026

NETWORK DIRECTORY



A national network of people, partners and services
for everyone affected by spinal cord injury

spinal.co.uk

WELCOME

We've put together this directory so you can see at a glance some of the best services for people affected by spinal cord injury (SCI). Our trusted partners and business members complement SIA's support for people with spinal cord injury and their families in all aspects of a fulfilled life post-injury.



CONTENTS

- 3 [SIA Strategy 2030](#)
- 4 [What is spinal cord injury \(SCI\)?](#)
- 5 [How SIA can help](#)
- 6 [A national network](#)
- 7 [Trusted regional partners regional map](#)
- 8 [Spinal cord injury centres](#)
- 9 [Trusted legal partners](#)
- 14 [SIA Healthcare](#)
- 17 [Trusted care partners](#)
- 21 [Campaign partner](#)
- 23 [Working together](#)
- 29 [Business members](#)
- 40 [Keep in touch](#)
- 41 [Can you help others affected by SCI?](#)
- 42 [Meet the team](#)

PLEASE GET IN TOUCH

Person with SCI or family member

If you or a family member has a spinal cord injury, you can reach out via a number of ways:

To book a meeting with your local support coordinator

> find your local contact on [our website](#)

To book a telephone consultation with our spinal cord injury clinical specialists

> please complete our [referral form](#) or email SCINurseSpecialists@spinal.co.uk

For help with funding, care, access issues or professional, peer-led counselling

> please call our support line on 0800 980 0501, 9am to 5pm, Monday to Friday

Healthcare professional

If you're a healthcare professional caring for people with spinal cord injury, please get in touch:

To enquire about training and spinal cord injury education

> please contact academy@spinal.co.uk

Organisation

If you're an organisation supporting people with spinal cord injury, we'd love to hear from you:

To enquire about our trusted partner and business member schemes:

> please contact corporate@spinal.co.uk, call 01908 604 191 (option 3) or meet the team on page 43

Whatever your connection, please follow us to find out more and help spread the word about how we can help.



FUTURE PLANS

2023 marked the launch of our new and ambitious seven-year strategy. Our purpose is to be the expert, guiding voice for people with spinal cord injury, for our sector and for the public, the media and the government. We have three transformative goals:



Goal 1

A health and care system that works for people with spinal cord injury

Goal 2

Double the number of members accessing our network of services

Goal 3

A UK government and public championing the cause

In addition to these overarching priorities, we have set departmental goals, objectives and milestones for the next 12 months as part of a seven-year strategy to engage 30,000 members with spinal cord injury. Our ambitious planning framework incorporates the needs of those affected by spinal cord injury, our strengths and expertise as a charity alongside our financial parameters.

The above goals will be approached in four different ways:


We will do this through:

1

Providing critical health and care support for people with spinal cord injury



2

Coordinating a network of support services nationwide



3

Building vital specialist expertise across the health and care sector



4

Campaigning for change



WHAT IS SPINAL CORD INJURY

Every two hours, a person's life is changed when they sustain a spinal cord injury. Their world – and that of their family – is turned upside-down. Spinal cord injury can be caused by accidents, illnesses and health conditions.

Spinal cord injury is life-changing, causing paralysis and loss of sensation below the level of damage to the spinal cord. People with spinal cord injury might not be able to walk or might lose control of their bladder and bowel function.

People with a higher-level injury may also have limited or no hand and arm function or rely on a ventilator to breathe. Some people might still be able to walk but experience other complications because of their injury.

A spinal cord injury can be hugely traumatic – for both the person directly affected and their family.

The news that you may never walk again, or can no longer control your bladder or bowels, is devastating. The physical and psychological impact of sustaining a life-changing disability that affects every aspect of your own life, and the lives of those closest to you, is undeniably huge.

This national directory – alongside SIA's support network guides – is designed to help anyone affected by spinal cord injury build a network of practical, emotional and psychological support.

Scroll through to find out more about how SIA – and our network of trusted partners and business members – can help people rebuild all aspects of their lives at any point after sustaining a spinal cord injury.



"The thing with SIA is, they don't just reassure you and then leave you waiting, wondering, and still worrying. They reassure you, then they act. Supporting you, connecting you, equipping you with all the knowledge you didn't know you needed. I didn't know what I didn't know. SIA filled in those blanks."

Tina - daughter of person with spinal cord injury

HOW SIA CAN HELP

A fulfilled life for everyone affected by spinal cord injury

Spinal Injuries Association (SIA) is the expert, guiding voice for life after spinal cord injury. We are a membership organisation – here for the 105,000 people living with spinal cord injury – as well as the hundreds of thousands of people who are their families, friends, carers and healthcare providers.

We want to make sure everyone affected by spinal cord injury has:

- a health and care system that meets their needs
- access to expert support and advocacy at any point
- an informed and supportive society.

Compassionate, courageous, collaborative and inclusive – we listen to our service users and members, equip them with and connect them to the knowledge, skills and support they need to lead a fulfilled life.

A nationwide network of support

One of the ways we do this is through coordinating a national network of support services. Our trusted partners and business members can offer specialist support in all aspects of living well with a spinal cord injury.

If you visit the '[Get support](#)' section of our website, or look through our support network guides, you'll see we split our information, support and advocacy for people affected by spinal cord injury into three areas as follows:

Body Matters



Practical advice from a peer on sensitive, must-know topics such as bladder and bowel management, self-image, relationships and sexual function, plus expert advice from clinical specialists

Mind Matters



Emotional support from peers who've been there, and a unique peer-led counselling service to help people and their families adapt to life with spinal cord injury.

Life Matters



An experienced team with a proven track record of success in advocating and campaigning for the rights of people with spinal cord injury and supporting them with getting back to work, wheelchair skills, transport, holidays or starting a family.

> Alternatively, you can [search by region](#) and meet the SIA team – and extended team of trusted partners and other businesses – who operate in each geographical area.

In this national directory, we've listed our partners, business members and the other organisations with whom we work. We've grouped them by sector, according to the type of services they provide. Under each individual entry, you'll see the organisation's location and where they operate, as well as the range of services they offer.

The sectors covered include:

- specialist spinal cord injury centres
- care
- legal
- finance

A NATIONAL NETWORK OF TRUSTED PARTNERS AND BUSINESS MEMBERS



As well as the services SIA can offer, at no cost to people with spinal cord injury or their families, we know that more is often needed. So, we're working with an ever-increasing number of local and national partners and business members, creating the best network possible, so that we can serve, support and fight for every aspect of what defines each person's fulfilled life.

Because we understand that a fulfilled life looks different for each of us. And we know it could be a range of hopes, dreams and aspirations that are important to each person with a spinal cord injury. Retaining a job, having children, going to the shops – not just the all-important basics such as good bowel management and skin care.

How we choose our trusted partners

As the expert, guiding voice for life after spinal cord injury, we have a deep understanding of the needs of people with spinal cord injury. We've used that knowledge and insight to develop criteria by which our partners are selected. We always promote freedom of choice, but are proud to recommend some of the organisations we know well and which have demonstrated best practice.

All our partners have the skills, knowledge and understanding to help people not just adapt to injury, but also to thrive.

All our trusted partners:

- commit to SIA's values and partnership charter
- are recognised as industry leaders
- are accredited by their relevant regulatory body
- undergo due diligence processes before joining our network
- commit to regular reviews, training and feedback meetings

Our business members

As part of our commitment to give people with spinal cord injury access to a wide range of options, we've expanded our network by enlisting business members too. These organisations offer the spinal cord injury community that extra level of choice in all aspects of leading a fulfilled life with spinal cord injury

Both business members and trusted partners make a commitment to provide wide-ranging support to SIA so that we can be there for everyone affected by spinal cord injury.

TRUSTED LEGAL PARTNERS

REGIONAL MAP

NORTH EAST

Aspire Law
Spinal Cord Injury Solicitors

IM irwinmitchell

YORKSHIRE

fletchers solicitors

STEWARTS

NORTH WEST

jmw

+ Slater Gordon Lawyers

EAST MIDLANDS

fletchers solicitors

jmw

WEST MIDLANDS

Higgs LLP

IM irwinmitchell

EAST OF ENGLAND

Bolt Burdon Kemp

fletchers solicitors

SOUTH WALES & WEST OF ENGLAND

IM irwinmitchell

+ Slater Gordon Lawyers

SOUTH CENTRAL

rwk goodman STEWARTS



SOUTH WEST

hcc HORWICH COHEN COGHLAN SOLICITORS

+ Slater Gordon Lawyers

LONDON

Aspire Law
Spinal Cord Injury Solicitors

LEIGH DAY
LAWYERS AGAINST INJUSTICE

SOUTH EAST

Bolt Burdon Kemp

hcc HORWICH COHEN COGHLAN SOLICITORS

SPINAL CORD INJURY CENTRES

SIA works closely with the national Spinal Cord Injury Centres. Explore the [National Spinal Database](#), locate your nearest Spinal Cord Injury Centre on our website or find the contact details below:



North East and Yorkshire

The Yorkshire Regional Spinal Injuries Centre (YRSIC)

Gate 4, Floor A
Pinderfields Hospital
Aberford Rd
Wakefield WF1 4DG

www.midyorks.nhs.uk/spinal-injuries-centre

Golden Jubilee Regional Spinal Cord Injuries Centre

The James Cook University Hospital
Marton Road
Middlesbrough TS4 3BW
www.southtees.nhs.uk/services/spinal-injuries/

North West

North West Regional Spinal Cord Injuries Centre

Southport District General Hospital
Town Lane
Southport
Merseyside PR8 6PN
www.southportandormskirk.nhs.uk/services/spinal-injuries/

East Midlands

Princess Royal Spinal Cord Injuries Centre

Northern General Hospital
Osborn Building
Herries Road
Sheffield S5 7AU
www.princessroyalspinalcentre.nhs.uk/

South Central

The National Spinal Injuries Centre

Mandeville Road
Aylesbury
Buckinghamshire HP21 8AL
www.nsic-online.org.uk/

West Midlands

Midland Centre for Spinal Injuries

The Robert Jones & Agnes Hunt Orthopaedic Hospital
NHS Foundation Trust
Oswestry
Shropshire SY10 7AG
www.rjah.nhs.uk/our-services/midland-centre-for-spinal-injuries/

South Wales & the West of England

Welsh Regional Spinal Cord Injury Centre /

Uned Anafiadau Llinyn y Cefn Rhanbarthol Cymru

The Llandough Centre for Specialist Spinal and Neurorehabilitation
Penlan Road
Penarth CF64 2XX
www.cavuhb.nhs.wales/news/home-page-news/spinal-and-neuro-specialised-rehab-services-move-to-uhl/

London

London Spinal Cord Injury Centre (LSCIC)

Royal National Orthopaedic Hospital
Brockley Hill
Stanmore
Middlesex HA7 4LP
www.rnoh.nhs.uk/patients-and-visitors/ward-profiles/london-spinal-cord-injury-centre-lscic

South West

Spinal Treatment Centre – Salisbury

Spinal Outpatient Department / Longford Ward
Salisbury District Hospital
Odstock Rd
Salisbury SP2 8BJ
www.salisbury.nhs.uk/wards-departments/departments/spinal-treatment-centre/



TRUSTED LEGAL PARTNERS

Getting expert legal advice is something we strongly recommended to anyone who has sustained a spinal cord injury.

We're confident our trusted legal partners are among the most qualified and experienced legal professionals out there. Crucially they've also assisted many people with spinal cord injury on the road to recovery after injury, and they know from that experience – and through their work with SIA – the unique nature of the support and advice people may need, whether it be supporting someone with a potential compensation claim or answering general legal queries relating to life post-injury.

> Meet our trusted legal partners below and our legal business members on page 32

TRUSTED LEGAL PARTNERS

Aspire Law

www.aspirelaw.co.uk



Aspire Law is one of the leading law firms for spinal cord injury claims with many of their lawyers ranked as leaders in the field of spinal cord injury.

It's the only law firm in the UK with dedicated spinal cord injury lawyers, dealing exclusively with spinal cord injury claims. They donate 50% of their profits to Aspire, a spinal cord injury charity.

The financial results Aspire Law get for their clients are first rate with cases settling frequently for seven and eight figure sums, several of which are regarded as some of the highest settlements for spinal cord injury.

Read more:

www.spinal.co.uk/aspire-law

Locations:

National law firm based in central London, supporting clients across London and regionally.

SIA trusted partner region:

One of SIA's trusted legal partners in London and the North East.

Get in touch:

T 0208 176 4716

E help@aspirelaw.co.uk

Bolt Burdon Kemp

www.boltburdonkemp.co.uk



While compensation cannot 'undo' any injury, it can provide the means to live as comfortable a life as possible, along with peace of mind. It will help meet financial needs and provide future security.

From a properly adjusted home to targeted therapies, peer support and excellent aids and equipment, BBK knows how vital all this and more is to a full and happy life after injury. They offer a free, no-obligation chat to ascertain what happened. If they think they can help, they will investigate a potential client's claim and discover who might be responsible for the injury – whether by accident or through medical negligence – and act on a 'no win, no fee' basis if instructed.

Read more:

www.spinal.co.ukbolt-burdon-kemp

Locations:

Based in central London and representing clients in England and Wales.

SIA trusted partner region:

One of SIA's trusted legal partners for the East of England and the South East.

Get in touch:

T 020 3883 6210

E spinalinjury@boltburdonkemp.co.uk

Fletchers

www.fletcherssolicitors.co.uk



Fletchers specialises in serious personal injury claims and have been supporting people with life-changing injuries for more than 30 years. They have secured millions of pounds in compensation for their clients, and handle incredibly complex cases involving spinal cord injuries, amputation and traumatic brain injuries.

Under the ownership of Sun European Partners, they are expanding their team through a strategic mergers and acquisition programme, having acquired cycling incident specialists, Cycle SOS; medical negligence specialists, Minton Morrill; and leading customer acquisition specialist for the legal sector, Blume. They are among the highest ranked in both the Legal 500 and Chambers & Partners.

Read more:

www.spinal.co.uk/fletchers

Locations:

Nationwide, with offices in Leeds, Manchester and Southport.

SIA trusted partner region:

One of SIA's trusted legal partners in the East Midlands, East of England and Yorkshire.

Get in touch:

T 0330 013 0251

E SIAenquiries@fs.co.uk

TRUSTED LEGAL PARTNERS

HCC Solicitors

www.hccsolicitors.com



HCC Solicitors is an award-winning law firm with offices in the North (Manchester), Midlands (Birmingham) and South of England (London). An experienced team of partners, qualified solicitors and case handlers – as well as support staff – work with clients with spinal cord injury every day.

HCC is a specialist serious injury law firm with a family-first approach to helping people who have sustained a spinal cord injury. This means they focus their support not only on the individual who has experienced a life-changing injury – but also their wider network of family, dependents and loved ones who are also impacted emotionally, financially and practically.

Read more:

www.hccsolicitors.com/partnerships/sia/

Locations:

Offices in London, Birmingham and Manchester with staff and clients across the country.

SIA trusted partner region:

One of SIA's trusted legal partners in the South East and South West.

Get in touch:

T 07775808820

E patrick.maguire@hccsolicitors.com

Higgs

www.higgsllp.co.uk



Higgs is committed to helping clients with spinal cord injury achieve the best possible results. And securing the best financial settlement to provide security for the future. Their lawyers will meet with the injured person or their family free of charge, either at home or in hospital, and carry out a comprehensive assessment of the injured person's claim. If instructed, they will act on a 'no win, no fee' basis.

Higgs work with industry-leading case managers, consultants and therapists to support all clients with spinal cord injury's needs. The advantages for their spinal injury clients include:

- proactive approach to planning for early discharge from hospital
- an early clinical assessment of rehabilitation needs
- early access to interim payments when liability is accepted
- securing the best rehabilitation and treatment, both now and in the longer term

Read more:

www.spinal.co.uk/higgs-sons

Locations:

Based in Dudley, West Midlands.

SIA trusted partner region:

One of SIA's trusted legal partners in the West Midlands.

Get in touch:

T 0345 111 5050

E law@higgsllp.co.uk

Irwin Mitchell

www.irwinmitchell.com



Making a claim can seem daunting, but with more *APIL-accredited spinal injury specialists than any other firm in the UK, Irwin Mitchell can help clients with spinal cord injury access the best medical care, rehabilitation and support.

Compensation can pay for important services to support recovery or help with everyday living, such as adaptations to the home, transport, help with loss of earnings and expenses, private healthcare, rehabilitation and therapy.

Most of the spinal injury claims Irwin Mitchell handles are on a 'no-win, no-fee' basis. So, nothing to pay upfront. And no legal fees if your claim is unsuccessful.

*APIL = Association of Personal Injury Lawyers

Read more:

www.spinal.co.uk/irwin-mitchell

Locations:

Offices in Birmingham, Bristol, Cambridge, Cardiff, Glasgow, Leeds, Liverpool, London, Manchester, Middlesbrough, Newcastle, Sheffield and Southampton - supporting clients nationally.

SIA trusted partner region:

One of SIA's trusted legal partners in the North East, the West Midlands and South Wales & West of England.

Get in touch:

T 0808 159 6717

E customersupport@irwinmitchell.com

TRUSTED LEGAL PARTNERS

JMW Solicitors

www.jmw.co.uk



JMW's specialist spinal injury team is highly-regarded in the fields of personal injury and medical negligence.

Cathy Leech heads the spinal injury team for personal injury claims and is a winner of several legal awards for excellence in legal care, and two SIA Rebuilding Lives awards.

Eddie Jones heads the award-winning medical negligence team and is a noted leader in the field himself. The JMW specialist spinal injury team supports clients nationally with home visits and a network of leading case managers and rehab professionals.

Jamie Rhind, JMW's client support manager, brings his personal experience of spinal cord injury to provide empathetic insight and guidance to clients and their families

Read more:

www.spinal.co.uk/jmw-solicitors

Locations:

Offices based in Manchester, Liverpool and London. Supporting clients nationally.

SIA trusted partner region:

One of SIA's trusted legal partners in the North West and the East Midlands.

Get in touch:

T 03456 461 744

E sia@jmw.co.uk

Leigh Day

www.leighday.co.uk



Leigh Day are specialists in their field and ranked in the top tier by the two foremost legal directories, Chambers & Partners and The Legal 500.

Their personal injury team act in all kinds of cases, including road traffic collisions, accidents at work and at home, extreme sports, train crashes, terrorist attacks.

Their clinical negligence team helps people injured because of substandard care by a medical professional, including misdiagnosis, delayed diagnosis, incorrect treatment and surgical mistakes.

Read more:

www.spinal.co.uk/leigh-day

Locations:

Based in Central London, supporting clients across London and nationally.

SIA trusted partner region:

One of SIA's trusted legal partners in London.

Get in touch:

T 020 7650 1200

E SIAtrustedpartner@leighday.co.uk

RWK Goodman

www.rwkgoodman.com



RWK Goodman's team of specialist spinal cord injury solicitors deliver more than compensation. They will build a team around an injured person and their family, ensuring they get the personal, medical, legal and financial support they need to lead a fulfilled life after spinal cord injury.

RWK Goodman specialise in all types of spinal cord injury compensation claims, including personal injuries such as:

- road traffic accidents
- accidents at work
- riding accidents
- accidents abroad
- falls from height
- sporting accidents - and clinical negligence cases.

As well as helping secure compensation, they often continue to act as clients' lifelong legal partners, taking care of all legal needs as they arise.

Read More:

www.spinal.co.uk/rwkgoodman

Locations:

Based in Bath, supporting clients across England and Wales.

SIA trusted partner region:

One of SIA's trusted legal partners in South Central.

Get in touch:

T 08000 277 329

E spinal.team@rwkgoodman.com

TRUSTED LEGAL PARTNERS

Slater and Gordon

www.slatergordon.co.uk



Slater and Gordon's large North West team is known as a 'centre of excellence', with lawyers based throughout the North West and Wales, meaning one of their experts is always nearby to visit you at home or in hospital.

They are highly specialised in representing people who've sustained spinal cord injury because of an accident or medical negligence.

They also have many other teams of consumer law experts, meaning they can provide an end-to-end legal service for all life's legal needs.

Read more:

www.spinal.co.uk/slatter-and-gordon

Locations:

Offices in Birmingham, Cardiff, Cambridge, Edinburgh, Knutsford, Liverpool, London, Manchester, Newcastle, Sheffield, Wirral.

Supporting clients nationally.

SIA trusted partner region:

One of SIA's trusted legal partners for the North West, South Wales & West of England and the West Midlands.

Get in touch:

T 0330 995 6080

E dominic.smith@slatergordon.uk

Stewarts

www.stewartslaw.com

STEWARTS

Stewarts only acts for clients who have sustained life-changing injuries and, over the last 30 years, has acted for more people with spinal cord injury than any other law firm.

The solicitors at Stewarts only ever act for 10-12 clients at any one time, ensuring every client receives the time and attention they deserve.

Stewarts also has a unique Pro Bono team which provides free legal assistance to people with spinal cord injury, whether or not they have a claim for compensation.

Read more:

www.spinal.co.uk/stewarts

Locations:

Based in central London.

SIA trusted partner region:

One of SIA's trusted legal partners in South Central and Yorkshire.

Get in touch:

T 020 7822 8000

E sia@stewartslaw.com

Trusted partners

For more information visit our website to scroll through out network of trusted partners who can help with legal, care financial and other needs

[VISIT OUR WEBSITE](#)





A dedicated home delivery service for people with spinal cord injury

SIA Healthcare is a dedicated home delivery service that provides people with spinal cord injury with all of their urology and stoma products, and prescription medication efficiently and discreetly to their door.

"Your service has been impeccable. All I can say is thank you, you've made my life so much easier."

SIA Healthcare user

Company information

Locations:

Offering support across the UK

Get in touch:

T 0800 470 4576

E enquiries@siahealthcare.com

Meet the team

SIA Healthcare is a dedicated home delivery service that provides people with spinal cord injury with all their urology and stoma products, and prescription medication efficiently and discreetly to your door or to a place that is convenient for you.

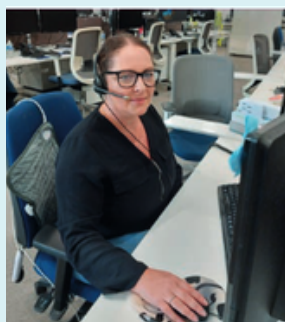
SIA Healthcare was built on a long-standing relationship between SIA and Bullen Healthcare to establish an industry-leading delivery service for people with spinal cord injury, their families and the wider spinal cord injury community. Now in its 10th year, SIA Healthcare continues to provide exceptional support and services to those who need it most.

It's really easy to register for SIA Healthcare, and the service is completely free! Just tell us what you need, and we'll take care of the rest—including talking to your GP about your prescription. Plus, our specialist pharmacists and nurses are on hand to provide expert support and guidance whenever you need it.

Call us today on 0800 470 4576

or email enquiries@siahealthcare.com

Hear what some of the SIA Healthcare team say



Maxine – Personal advisor

"I really enjoy working at SIA Healthcare. For me, it is the day-to-day contact with our customers that is the best bit. As well as taking their orders, I get to hear about what they are up to, things that are happening in their lives, and that gives me such a great feeling."



Lewis– Driver

"In most delivery jobs you just turn up, hand over the parcel and off you go, not with SIA Healthcare. I deliver to the same people every month so you get to know them. Sometimes they might ask for help getting their parcel into the house, or they might take the mickey out of me for the football result at the weekend!"



SIA Healthcare is a service set up by Spinal Injuries Association and operated on its behalf by Bullen Healthcare Group Limited and Pharmore Plus.

sia spinal
injuries
association
for life after spinal cord injury

BULLEN

pharmore plus



Discover SIA Lifestyle

SIA's online shopping platform offering members access to a variety of discounts, with every purchase generating a donation to support SIA's work. Visit the SIA Lifestyle shop online to explore the full range of discounts available to members.





TRUSTED CARE PARTNERS

Selecting good quality care that's tailored to specific and evolving needs is essential to leading a fulfilled, independent life with spinal cord injury.

> [Meet our trusted care partners below and turn to page 30 to meet our care business members](#)

TRUSTED CARE PARTNERS

National trusted care partners

Origin Care

www.origincare.com



ORIGIN is different – being managed since 2001 by the founders, Peter Henry and Linda Adamsen. Like their clients, they live and breathe spinal cord injury because Peter himself has a complete C5/6 injury and is also a client, while Managing Director, Linda Adamsen, has extensive care management experience.

Alongside the Directors, a full specialist SCI team works to support their Clients and PAs to enable their Clients to live the life they want to. All PAs drive - helping Clients to attend work, social engagements and go on holiday. Unlike agencies offering general 'complex care', ORIGIN is a true specialist, providing only high-quality, bespoke live-in spinal cord injury care.

Read More:

www.spinal.co.uk/origin

Locations:

Nationwide.

Get in touch:

E la@origincare.com

Premium Care Solutions (PCS)

www.pcs.uk.com



Premium Care Solutions (PCS) is recognised nationally for their expertise in planning and providing the very best person-centred care for individuals wanting to live independently in the community and who have complex health needs. PCS's specialism is providing bespoke care packages, with clinical oversight, for individuals with SCI, including providing support with ventilator dependency, tracheostomy care and as well as assisting those with ABI's and neuromuscular conditions. PCS support both children/young people and adults across the UK.

Read More:

www.spinal.co.uk/pcs

Locations:

Nationwide.

Get in touch:

T 07734 926796 or 07970 080290

E jgarcha@premium-care.co.uk or adehal@premium-care.co.uk



TRUSTED CARE PARTNERS

Regional trusted care partners

Abbots Care

www.abbotscare.com

For over 28 years, Abbots Care has been dedicated to making a meaningful difference to the lives of individuals and families through compassionate home care services. Their team, comprised of highly trained professionals, is committed to supporting those affected by spinal cord injuries, enabling them to live independently and embrace life to the fullest within the comfort of their homes.



Read More:

www.spinal.co.uk/abbots-care

Locations:

Berkshire, Buckinghamshire, Sussex, Hampshire, Kent, Middlesex, Oxfordshire, Surrey, London, Cornwall, Dorset, Devon, Gloucestershire and Somerset.

Get in touch:

E ryan@abbotscare.com

Alcedo Care

www.alcedocare.co.uk

Alcedo Care is a leading provider of Complex Care across the North of England and Wales whose aim is to 'enrich lives and promote independence' for our clients by providing exceptional, quality care. Our team consists of highly experienced staff who have a wealth of knowledge, in supporting clients, with complex care & spinal injuries needs, in the comfort of their home. We provide the support of highly skilled healthcare professionals, with specific skills, tailored with bespoke training from our in-house nurses & complex care professionals, to ensure we meet the needs of all of our clients.



Read More:

www.spinal.co.uk/alcedo-care

Locations:

North West of England, North Wales, South and West Yorkshire.

Get in touch:

E clare.murray@alcedocare.co.uk

Complexus Care

www.complexus-care.co.uk

Complexus Care designs specialist care around you. As a family, for over 20 years, they have been dedicated to supporting individuals with spinal cord injuries via bespoke, nurse-led support at home. Their holistic approach puts the client needs, and wishes, at the centre of everything that they do.



Read More:

www.spinal.co.uk/complexus-care

Locations:

National locations, services across the UK

Get in touch:

E agarcha@complexus-care.co.uk

T [01536 850700](tel:01536850700)

TRUSTED CARE PARTNERS

Regional trusted care partners

Lifeways Care

<https://lifewayscare.org>

Established in 2021, Lifeways Care Limited is a trusted care provider dedicated to delivering bespoke, person-centred support for adults with complex needs. They specialise in caring for individuals with brain injuries, spinal cord injuries, physical disabilities, Motor Neurone Disease (MND) and other challenging conditions, ensuring every care plan is tailored to the unique circumstances and preferences of each person. The service is nurse led and they actively work to understand and support each individual's unique well-being, ensuring that every voice is heard and valued.

Read More:

www.spinal.co.uk/lifeways-care

Locations:

Lincolnshire, Nottinghamshire, South Yorkshire and East Riding

Get in touch:

E admin@lifewayscare.ltd

T 07494788946



Paragon Home Healthcare

www.paragonhh.co.uk

Paragon Home Healthcare specialises in comprehensive homecare for individuals with spinal cord injuries, offering day/night shifts and 24-hour live-in care. Recognised by the Spinal Injuries Association, their commitment to exceptional care ensures accessibility and community integration. With carefully selected staff and rigorous training, they provide compassionate support and specialised SCI care and empower clients to live fulfilling, independent lives.

Read More:

www.spinal.co.uk/paragon

Locations:

Buckinghamshire, Hertfordshire, Kent, London, Surrey and Sussex.

Get in touch:

E catherine.hellary@paragonhh.co.uk



Secure Healthcare Solutions

www.securehealthcaresolutions.co.uk

Secure Healthcare Solutions is a regulated healthcare provider offering personalised care & support to individuals requiring personal and or complex care within a flexible home-based care service to standards we expect for our own families

Read More:

www.spinal.co.uk/secure-healthcare-solutions

Locations:

West Midlands

Get in touch:

E robbie.steeles@nhs.net





CAMPAIGN PARTNER

One of our 2030 Strategy goals is 'A UK government and public championing the cause of people with spinal cord injury and their families'. Working with our campaign partner we aim to bring about systemic change, fight social injustice head-on and amplify the voice of people with spinal cord injury.



CAMPAIGN FOR CHANGE PARTNER

Hudgell Solicitors

www.hudgellsolicitors.co.uk



Hudgell Solicitors and SIA have joined together as campaign partners to fight for change and to amplify the voice of people living with spinal cord injury.

Hudgell Solicitors work alongside us to educate and engage the UK public through awareness campaigns, and to mobilise the spinal cord injury community to contest the biggest barriers they face.

The national law firm has fought and campaigned for social injustice head-on in recent years, leading high-profile cases including representing the victims of the Post Office Horizon Scandal, the families of the four young men murdered by serial killer Stephen Port, and those injured or who lost loved ones in the 2017 Manchester Arena terror attack.

Get in touch:

E seriousinjuryteam@hudgellsolicitors.co.uk

T 0808 231 6914

Locations:

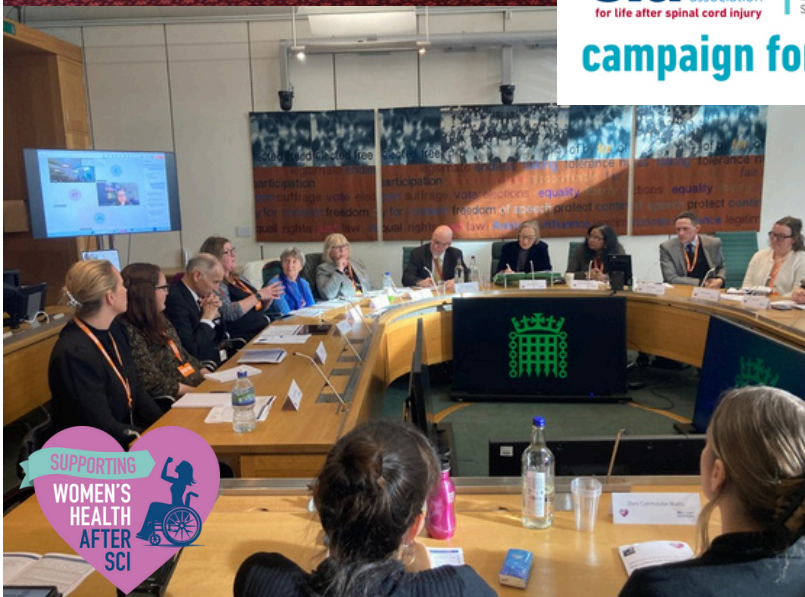
Offices in Hull, Manchester and London



sia spinal
injuries
association
for life after spinal cord injury

Hudgell
SOLICITORS

campaign for change



**SUPPORTING
WOMEN'S
HEALTH
AFTER
SCI**

Paralysed Bowel Campaign



WORKING TOGETHER

At SIA, we work closely with other organisations that share our vision of a fulfilled life for every person with spinal cord injury. Over the following few pages, we'll introduce you to a mix of charities, not-for-profits and associations that can support people with spinal cord injury with many aspects of a fulfilled life, from care, rehabilitation and mental health to benefits advice, housing support and spinal cord injury research

> [Find out more about the other organisations that we work closely with on pages 23 - 28](#)

WORKING TOGETHER

Aspire

www.aspire.org.uk

Aspire

Supporting people with spinal injury

Many people who've sustained a spinal cord injury find themselves discharged somewhere totally unsuitable, such as an un-adapted house or a care home. This robs people of their independence at a time when they should be ready to rebuild their lives. The Aspire accessible housing programme offers an alternative. It provides homes located around the UK for use on a short-term basis while a permanent housing solution is found. It might be that someone's own property is being adapted, or they're waiting for their local authority to find them something suitable.

Meanwhile, an Aspire house can get people with spinal cord injury back among friends and family, getting on with their lives.

Aspire also offers information and advice about accommodation and adaptations to people's own homes following a spinal cord injury, and a free-of-charge, dedicated welfare benefits advice service.

Read more:

www.spinal.co.uk/get-support/sia-partners/our-partners/aspire/

Locations:

Based in Stanmore, London and supporting people with spinal cord injury across the UK.

Get in touch:

T 020 8954 5759

E welfarebenefits@aspire.org.uk and housingadvice@aspire.org



Branch Properties Accessibility Specialists

www.branchproperties.co.uk



Consulting agents specialising in sales, lettings and finding accessible properties to meet the accommodation needs of disabled people.

In a market where there is a chronic shortage of suitable, inclusive housing, this organisation specialises in finding, sourcing and providing wheelchair accessible properties through its tailored service.

Leading specialists in meeting the accommodation needs of disabled people, Branch Properties has been a proud key player in accessible property since 2015. Partnering with Disability Horizons, they've co-produced the 'Ultimate Guide to Finding an Accessible Home', which they can offer members with spinal cord injury, along with a full range of services for people who require independent and inclusive living.

Locations:

Based in London, supporting people all over the UK.

Get in touch:

T 020 3475 4022

E info@branchproperties.co.uk



WORKING TOGETHER

Breathe and Recover

www.breatheandrecover.com

Breathe and Recover is based on the Living Yoga Method™, which uses the power of breathwork and yoga to get the most out of the respiratory and nervous systems which govern so much of our physical and mental health. Breathing is one of the most overlooked tools after a spinal cord injury has happened that can be used to create energy and health in our systems.

The Breathe and Recover team is made up of Living Yoga Method trained teachers with first-hand long-term experience of working with people who have experienced trauma - specifically spinal cord injury - including a paramedic, charge nurse at a spinal rehabilitation centre and a clinical project officer and trauma-informed breathwork and yoga teacher.

Locations:

Based in Southampton, delivering online group classes.

Get in touch:

E contact@breatheandrecover.com



CESCI (Cauda Equina SCI)

www.cesci.org

Cauda Equina Spinal Cord Injury (CESCI) is a support group dedicated to helping people living with Cauda Equina Syndrome (CES) find resources and support. They are a community of individuals who understand the challenges of living with CES and strive to help one another. Their website is a great place to find information about the condition and connect with others who are going through similar experiences. They offer blogs, events, and links to helpful resources. Their goal is to provide a safe and supportive space for those living with CES to find the help they need.

Locations:

Nationwide

Get in touch:

E support@cesci.org



WORKING TOGETHER

MASCIP (The Multi-disciplinary Association of Spinal Cord Injury Professionals)

www.mascip.co.uk



MASCIP's prime objective is to provide a national professional forum to promote standards in clinical practice, foster research and encourage the development of health and social care services for people with spinal cord injury.

MASCIP exists to enable all professions and grades of staff associated with the care and welfare of people with spinal cord injury, both within and outside Spinal Cord Injury Centres, and to articulate professional issues and concerns. On behalf of its membership, MASCIP will also lobby service commissioners, healthcare providers and the Department of Health on issues of significant professional concern.

Locations:

Members meet regularly at venues across the country.

Get in touch:

E mascipsecretary@gmail.com



Neurokinex

www.neurokinex.org

neuro
kinex

The Neurokinex programme for spinal cord injury is one of the leading activity-based rehabilitation programmes in the UK, helping people with spinal cord injury become fitter, stronger and more independent.

Whether an injured person is looking to continue with their rehabilitation, maximise their fitness or improve their overall wellbeing, Neurokinex can create a programme unique to each person with spinal cord injury.

People who've seen and used their services say the Neurokinex programme can help with adjusting from the highly structured hospital routine to life back at home. The momentum gained from having the initial six free-of-charge sessions can help to ensure ongoing rehabilitation gains.

Locations:

Hemel Hempstead, Gatwick, Bristol.

Get in touch:

E info@neurokinex.org



WORKING TOGETHER

Spokz People

www.spokzpeople.org.uk



Spokz People
Transforming disability

This organisation's wellbeing community and programme enables people with spinal cord injury to work with a peer to improve mental health and wellbeing. They have a member-only forum, chat room, weekly live events and Q&As and videos and events with guest speakers and celebrity disabled people, all with a focus on improving wellbeing.

Their programme consists of 12 chapters exploring all elements of mental health including relationships, body image, sleep, nutrition and exercise. Using text, images, videos and exercises, they'll support an injured person to think about the changes they'd like to work towards. Members say it helps improve self-esteem, build resilience and find meaning in life. It also reduces isolation and helps them manage the many challenging situations being disabled brings.

Spokz People offer a 30-day free trial, and after that support is available at £5 a month.

Locations:

UK-wide, online.

Get in touch:

T 01543 899317

E info@spokzpeople.org.uk



Soul Sanity

www.soulsanity.io



Soul Sanity acts as your mental health gym providing online activities, classes and support from qualified therapists, letting individuals focus on improving their mental health from the comfort of their own home.

Including mindfulness techniques such as meditation, laughing yoga, Tai Chi and Pilates; artistic outlets such as origami, journaling and painting; tips and tricks from wellness coaches tapping into your "happy place"; a Kids' Corner to help kids unwind and get creative; expert food advice from renowned dietitians and nutritionists; mood-boosting music sessions to recharge and retune; gardening tips and tricks from horticulture professionals; qualified therapists offering insights and support with behaviours, anxiety, stress management, and so much more!

Locations:

Online at www.soulsanity.io

Get in touch:

E info@soulsanity.io



WORKING TOGETHER

Stoke Mandeville Spinal Research

www.lifeafterparalysis.com



Stoke Mandeville Spinal Research (SMSR) funds cutting edge medical research into the complications that can arise with spinal cord injury. They encourage and support SIA members to engage with research into the prevention and treatment of complications such as UTIs and neuropathic pain. Their aim is to help people with spinal cord injury achieve greater independence, enabling them to engage more freely in education, work, hobbies, social activities, and family life. SMSR is helping develop SIA's research and innovation hub, bringing together researchers, clinicians and people living with spinal cord injury.

They provide grants to spinal cord injury researchers focusing on four priority areas:

- assistive technology primarily for upper limb function
- neuropathic pain
- pressure ulcers
- urinary tract infection

Read more:

www.spinal.co.uk/get-support/sia-partners/our-partners/stoke-mandeville-spinal-research/

Get in touch:

T 01296 316783

E derek.cutler@smsr.org.uk





BUSINESS MEMBERS

As part of our commitment to give people with spinal cord injury a wide range of support options across the UK, we've widened our network by enlisting business members to work alongside us and our trusted partners. These organisations offer the spinal cord injury community an extra level of choice in all aspects of leading a fulfilled life with spinal cord injury.

> [Meet our care, healthcare, rehabilitation, legal and motoring business members on pages 29 to 39](#)

Active Care Group

www.activecaregroup.co.uk

Active Care Group deliver comprehensive services spanning hospital care, neuro rehabilitation, residential support, care in the home, case management, and expert witness reporting. Our team is experienced in supporting individuals with brain and spinal injuries, neurological conditions, and complex needs requiring ventilation or respiratory care. We create personalised care pathways that blend cutting-edge rehabilitation technology, clinical expertise, therapeutic services, and compassionate support. Services are available in various settings to suit each person's unique needs. Our commitment is to help every individual to feel secure, valued, and empowered throughout their recovery and to achieve the best possible outcomes.

Get in touch:

E enquiries@activecaregroup.co.uk **T** 01732 779353



ena

www.ena.co.uk

We are a family-run homecare provider with over 30 years' experience, offering Live-in care across England and Wales. Our fully managed service covers everything from in-depth PA screening and in-house training to personalised support plans shaped around each individual's needs. We have particular expertise in supporting people with spinal and brain injuries, always with a focus on helping individuals live with dignity and independence in their own homes.

Get in touch:

E care@ena.co.uk **T** 01707 333 700

Locations:

England and Wales



Calidus Care Consultancy

www.caliduscare.co.uk

Calidus Care Consultancy offers bespoke consultancy and business development services to Complex Care providers, Case Managers & Solicitors. Our clients are at the heart of everything we do. As such, we wish to ensure all care services are tailored to each individual client based upon their needs, wishes, goals and aspirations. We can also support with care referrals and operational support. Let's raise the standards of care together, whilst remaining Compassionate, Curious, Caring, Confident and determined to help others.

Get in touch:

E enquiries@caliduscare.co.uk **T** 07583 777712



Jam Care

www.jamcare.co.uk

JAM Care's services are designed to address a wide range of medical conditions and individual care requirements, ensuring that each person receives the specialised support they need. By working alongside multidisciplinary teams, we provide high-quality, person-centred care that enhances the well-being and quality of life for those living with physical, neurological, and other complex health conditions.

Get in touch:

E enquiries@jamcare.co.uk **T** 01952 443613

Locations:

Head office in Shropshire. Service delivered in East Midlands, West Midlands and North West.





Novus Care

www.novus-care.com

Novus care specialise in providing complex healthcare at home, offering nurse-led care packages ranging from visiting care support to 24-hour care across England. With over 14 years of experience in supporting individuals with spinal cord injuries (SCI), they are dedicated to providing expert, personalised care in the home.

Get in touch:

E hello@novus-care.com **T** 0808 156 1596

Locations:

England.

NursingDirect

Nursing Direct

www.nursingdirect.co.uk

Nursing Direct has worked for over a decade delivering complex home-based care across the UK. As a CQC-registered, nurse-led service, the team provides strong clinical oversight and consistent staffing for people with spinal injuries and other high-acuity needs. Nursing Direct focuses on safe daily living, reliable routines and practical support that helps people stay independent and confident at home.

Get in touch:

E info@nursingdirect.co.uk **T** 0330 056 6000

Locations:

National Reach with a Head Office in Surrey and Newcastle upon Tyne.



Prestige Nursing & Care

www.prestige-nursing.co.uk

We provide expert-led, personalised home care for every stage of life that evolves with our clients' needs. Our comprehensive range of services provided by highly trained compassionate carers, registered nurses and clinical experts ensure our clients feel empowered, supported and in control of their care, whilst maintaining dignity, independence and quality of life

Get in touch:

E info@prestige-nursing.co.uk **T** 020 8254 7500.

Locations:

A range of locations across England.



Spinal Injury Support

www.spinalinjurysupport.com

Spinal Injury Support, part of the Acuity Care Group, specialises in supporting people across England who are living with a Spinal Injury. Delivering high-quality person-centred complex care at home, with a bespoke level of clinical nurse oversight as required. They recognise and embrace the individuality and unique requirements of those they support, enabling them to live a fulfilling life and celebrate the outcomes they achieve.

Get in touch:

E jody.tierney@acuitycaregroup.com **T** 0115 857 2928

Locations:

Head office in Nottingham, services delivered nationally across England.



CASE MANAGEMENT



Community Case Management Services

www.ccm services.co.uk

Specialist provider of case management for the rehabilitation of seriously injured adults and children. Providing quality of life solutions for catastrophic, complex and life changing injuries. CCMS ensure that the highest level and quality of rehabilitation and care is provided and tailored to individual needs.

Get in touch:

E enquiries@ccmservices.co.uk T 01608 682522

Locations:

Throughout the United Kingdom, Europe and Worldwide.

LEGAL



Ashtons Legal

www.ashtonslegal.co.uk

Specialists in legal claims for life-changing injuries and offering a full range of associated legal services for families.

Get in touch:

E enquiries@ashtonslegal.co.uk T 0333 222 0351

Locations:

Offices in Norfolk, Suffolk, Cambridgeshire and Leeds – serving clients nationally.

Barcan+Kirby

Barcan+Kirby

www.barcankirby.co.uk

Award-winning full-service law firm with personal injury lawyers specialising in spinal injury claims. Securing compensation, rehabilitation, and treatment, and for even the most complex and challenging spinal injury claims.

Get in touch:

E hello@barcankirby.co.uk T 0117 366 7382

Locations:

Offices in Bristol & South Gloucestershire, serving clients nationwide.



LEGAL

BOND ▼ TURNER

Bond Turner

www.bondturner.com

A leading legal practice dedicated to access to justice to help people move on in their lives through surpassing expectations.

Get in touch:

E info@bondturner.com **T** 0151 2363737

Locations:

Nationwide



Boyce Turner

www.boycesternerclaims.com

Full service law firm, with a strong private client team offering advice on injury, wealth protection and court of protection matters, whilst the Business Services teams offer support on employment, dispute resolution, corporate and commercial issues alongside a residential conveyancing department.

Get in touch:

E claimsadvice@boycesterner.com **T** 0800 1244845

Locations:

Based in Reading, Berkshire, representing clients across England, and servicing international clients too.



Burnetts Solicitors LLP

www.burnetts.co.uk

A niche serious injuries and clinical negligence firm dealing with life-changing injuries giving the very highest level of service and care to clients.

Get in touch:

E mla@burnetts.co.uk **T** 0191 9174686

Locations:

North East & Cumbria.



CFG

www.cfglaw.co.uk

Our specialist spinal team at CFG are here to help you to claim compensation after your spinal cord injury, working diligently and tirelessly to pursue your case, while offering clarity and reassurance along the way. But our experience covers so much more than just law. We also have a dedicated team of rehabilitation and support coordinators working alongside your legal team who are clinically trained, helping you to access the full wraparound support you and your family need.

Get in touch:

E advice@cfglaw.co.uk **T** 0800 988 7053



Dean Wilson LLP

www.deanwilson.co.uk

Specialist legal advice including, catastrophic personal injury claims, medical negligence and personal injury trusts.

Get in touch:

E amb@deanwilson.co.uk **T** 01273 249200

Locations:

Brighton & Hove - Serving England and Wales



Hudgell Solicitors

www.hudgellsolicitors.co.uk

Hudgell Solicitors have a reputation for assisting the seriously injured in every possible way, from offering help to ease immediate worries such as work and family finances to pressing for the most suitable immediate and long-term treatment and rehabilitative care.

Get in touch:

E seriousinjuryteam@hudgellsolicitors.co.uk
T 0808 231 6914

Locations:

Offices in Hull, Manchester and London.

LEGAL

HUGHJAMES

Hugh James

www.hughjames.com

Hugh James has extensive experience in handling compensation claims for people who have sustained spinal cord injuries. Their solicitors have been consistently ranked in the top tiers by the independent legal guides, Legal 500 and Chambers and Partners and are recognised as leaders in the field of personal injury and specifically spinal cord litigation.

Get in touch:

E HughJamesSIATeam@hughjames.com **T** 033 3016 2222

Locations:

Offices in Cardiff, London, Manchester, Plymouth and Southampton. Supporting Clients nationally.



Levenes Solicitors

www.levenes.co.uk

Claims for life-changing spinal cord injury. Multi-lingual team speaking 17 languages.

Get in touch:

E info@levenes.co.uk **T** 020 8881 7777

Locations:

Based in North London, supporting clients in England and Wales.



MRH Solicitors Limited

www.mrhsolicitors.co.uk

Services include serious injury, medical negligence, personal injury, business litigation services and road traffic collisions.

Get in touch:

E mail@mrhsolicitors.co.uk **T** 01204 535 333

Locations:

Offices in Bolton and London, supporting clients across England.



JCP Solicitors

www.jcpsolicitors.co.uk

One of the leading accident and personal injury solicitors in Wales. Specialising in catastrophic injuries including head injuries and spinal injuries.

Get in touch:

E law@jcpsolicitors.co.uk **T** 03333 209 244

Locations:

A regional South Wales law firm with offices in Swansea, Cardiff, Caerphilly, Carmarthenshire, Cowbridge, Fishguard, Haverfordwest and St Davids.



Minster Law

www.minsterlaw.co.uk

Serious injury legal experts specialising in road traffic collisions, bike collisions, and accidents at work. Specialisms include spinal injuries, head injuries, amputations, and chronic pain.

Get in touch:

E mapp@minsterlaw.co.uk **T** 01904 663 229

Locations:

Supporting clients across the UK.

NELSONS

Business Law | Personal Law | Investment

Nelsons Solicitors

www.nelsonslaw.co.uk

Nelsons' personal injury and clinical negligence team is ranked in tier one of the latest Legal 500 rankings.

Get in touch:

E newbusinessteam@nelsonslaw.co.uk **T** 0800 024 1976

Locations:

Offices in Derby, Leicester, Nottingham, providing legal advice across the country.

LEGAL

Oliver&Co SOLICITORS

Oliver & Co

www.oliverandco.co.uk

Oliver & Co, an employee-owned law firm based in Chester represents clients nationwide. Our dedicated personal injury team provides expert legal and rehabilitation support to clients facing life-changing injuries. Delivering a compassionate, client-focused service, we go above and beyond to secure the best outcomes, ensuring every client feels supported throughout their legal journey.

Get in touch:

E law@oliverandco.co.uk T 01244 312 306



Redkite Solicitors

www.redkitesolicitors.co.uk

Award winning serious injury lawyers specialising in life changing injuries. They have extensive experience in dealing with spinal injuries and head injuries. They are personal lawyers, who care. They are also a multi service law firm who can assist with family law, Court of Protection and Deputyship, Trusts, as well as offering a range of other services.

Get in touch:

E enquiries@redkitelaw.co.uk T 029 2049 1271

Locations:

Offices in Pembrokeshire, Carmarthenshire, Gorseinon, Brecon, Bridgend, Porthcawl, Cardiff, Cirencester, Stroud, Dursley, Gloucester, Stonehouse and Ledbury.

Osbornes | Law^o

Osbornes Law

www.osborneslaw.com

One of the largest private client law firms in London, with 160 lawyers and staff, offering services in personal injury, medical negligence, family law, property law, and more.

Get in touch:

E websiteform@osborneslaw.com T 020 4502 8767

Locations:

Serving London and surrounding areas.

R RINGROSE LAW

Ringrose Law

www.ringroselaw.co.uk

A trusted firm of Solicitors, established over 100 years ago. They have one of the largest Personal Injury & Medical Negligence Teams in the region and many years of experience achieving positive outcomes for clients. Their personal injury lawyers have acted for many victims of spinal injuries, obtaining compensation awards that ensure their clients can receive the best specialist input from care and rehabilitation providers, to enable them to live the life they want to live.

Get in touch:

E john.knight@ringroselaw.co.uk
or nikky.gubbin@ringroselaw.co.uk T 01522 561020

Locations:

Offices in Boston, Grantham, Grimsby, Lincoln, Newark, Nottingham, Sleaford and Peterborough



LEGAL



Simpson Millar

www.simpsonmillar.co.uk

Our team of specialist Personal Injury Solicitors have years of experience of handling serious injury claims. We offer a free claims assessment and expert legal advice, so we understand more about your accident, your injuries, and the impact on your life. We're dedicated to guiding families and individuals through these challenging times.

Get in touch:

E newclients@simpsonmillar.co.uk T 08082 394294

Locations:

Offices in Leeds, London, Manchester, Liverpool, Bristol, Cardiff and Lancaster.



STANDING UP FOR YOU

Thompsons Solicitors

www.thompsons.law

Thompsons' team of spinal injury solicitors act quickly to secure interim payments & support clients with their wider recovery journey.

Get in touch:

E enquiries@thompsons.law T 0800 0 224 224

Locations:

Offices across England and Wales.

SINTONS

Sintons

www.sintons.co.uk

A full-service law firm providing first class legal advice across the UK.

Get in touch:

E info@sintons.co.uk T 0191 226 7878

Locations:

Offices in Newcastle upon Tyne, York, Leeds and London – supporting clients with spinal cord injury nationwide.



Tollers Solicitors

www.tollers.co.uk

Spinal cord injury, brain and catastrophic injury specialists together with related support services such as professional deputy and trusteeship.

Get in touch:

E tristan.holdom@tollers.co.uk T 01604 258 175

Locations:

Offices in Northampton, Corby, Stevenage, Milton Keynes, Kempston and Oakham. Supporting clients with spinal cord injury in the South East, Central and East Midlands region

TRETHOWANS

Law. As it should be.

Trethowans LLP

www.trethowans.com

Complex personal injury and clinical negligence work as well as employment advice, tax planning, legal deputyships and conveyancing services among others.

Get in touch:

E spinal.injuries@trethowans.com T 01722 428 471

Locations:

Supporting clients with spinal cord injury in the South West, with offices in Salisbury, Bournemouth, Poole, Southampton, Winchester and London

REHABILITATION



Hobbs Rehabilitation

www.hobbsrehabilitation.co.uk

Specialist spinal cord injury service providing rehabilitation for complete and incomplete injuries as well as Cauda Equina Syndrome, with in and out-patient services available across multiple settings.

Get in touch:

E enquiries@hobbsrehabilitation.co.uk T 01962 779 796

Locations:

Over 10 centres across the south of England.



RTW Plus

www.rtwplus.com

RTW Plus is a leading provider of rehabilitation, treatment, and pain management services, dedicated to supporting individuals on their journey to recovery. We specialise in tailored interventions that promote independence, improve quality of life, and facilitate a successful return to work. Through a holistic approach, we collaborate with clients, healthcare professionals, and organisations to deliver effective and compassionate care

Get in touch:

E info@rtwplus.com T 02039160091



Smart Rehabilitation

www.smartrehabilitation.co.uk

At Smart Rehabilitation we provide co-ordinated interdisciplinary intervention working flexibly and seamlessly across your rehabilitation pathway. We work across a vast continuum of healthcare environments and have a team of carefully selected highly skilled clinicians, at the forefront of their profession, who provide high quality rehabilitation.

Get in touch:

E info@smartrehabilitation.co.uk T 07860124080

Locations:

Covering Derbyshire, East Midlands Manchester, Nottingham, South and West Yorkshire

HEALTHCARE PRODUCTS



Clinisupplies

Clinisupplies

www.clinisupplies.co.uk

Clinisupplies are specialists in bladder and bowel products; putting people living with bladder and bowel challenges at the heart of everything they do. They believe that no one should miss out on quality of life because of a health condition and, through transforming products and services, they aim to help people live more freely.

Get in touch:

E customerservices@clinisupplies.co.uk **T** 020 8863 4168

Locations:

Nationwide



Coloplast

Coloplast

www.coloplast.co.uk

Coloplast is a leading Danish-based business which includes Ostomy Care, Continence Care, Wound & Skin Care, Interventional Urology, and Voice & Respiratory Care. They are ranked as the world's most sustainable MedTech company in 2023 by Corporate Knights. Their organisation is circa 16,000 people strong.

Get in touch:

E help@coloplast.com **T** 0800 220 622

Locations:

Operating globally with a UK subsidiary, based in Peterborough, covering the UK and Republic of Ireland



Hollister

Hollister

www.hollister.co.uk

Hollister works with healthcare professionals and patients offering healthcare and continence products, with the aim of making life more rewarding and dignified for people.

Get in touch:

E samples.uk@hollister.com **T** 0800 260 6473

Locations:

Across the UK.

Teleflex™

Empowering the future of healthcare

Teleflex

www.teleflexurology.uk

Teleflex Urology Care supports users in living an active, independent, and fulfilling life – their mission is to empower your lifestyle – your way. Their range of innovative urological products, including intermittent catheters and urinary drainage systems, is designed with user health, comfort, and ease of use in mind.

Get in touch:

E info.uk@teleflex.com **T** 01494 532761

Locations:

Global, including UK-wide.

Business members

For more information, visit our website to view our network of business members who can help with legal, care, financial and other needs:

[VISIT OUR WEBSITE](#)



MEDICOLEGAL



Speed Medical

www.speedmedical.com

A leading provider of medical assessments, medical treatment, and medical reports, for over 25 years we have been working with customers in the insurance, legal, corporate, occupational health and healthcare markets to provide an unrivalled level of service. Irrespective of your business' size or instructing volume, we pride ourselves on building real relationships with you and your team whilst putting your clients and business at the heart of our service delivery. With a customer-centric team we have the expert knowledge and experience to drive exceptional service and quality.

Get in touch:

E Darren.pardon@speedmedical.com **T** 07595 330204

Locations:

Offices in Chorley, Lancashire, but we provide our services nationwide

AUTOMOTIVE



GM Coachwork

www.gmcoachwork.co.uk

GM Coachwork Ltd is a leading specialist in accessible vehicle and minibus conversions. Established in 1988, we have grown to employ over 300 skilled professionals across two state-of-the-art manufacturing sites. As the third-largest supplier of accessible vehicles to Motability, we are at the forefront of drive-from-wheelchair technology and offer the widest range of accessible vehicles in the UK. Our commitment to innovation and quality ensures that we provide mobility solutions that enhance independence and freedom for our customers.

Get in touch:

T 01626 853 050

KEEP IN TOUCH

We'd love to keep you up to date with all that's going on at SIA, as well as sharing news from our trusted partners and business members. Why not sign up to receive our quarterly updates?

Choose from:



FORWARD MAGAZINE

FORWARD – the only magazine dedicated to the spinal cord injury community – includes the latest news and research as well as personal stories and professionals' insights on topics such as health, daily living, employment, relationships and family, sport and travel.

> Subscribe to receive the print edition through the post or a page-turning digital edition from £24 a year.

**SUBSCRIBE
ONLINE TODAY**



THE VOICE

THE VOICE – a free monthly enews update sent straight to your inbox, it's a cost-effective way for us to keep you posted on everything that's going on in the spinal cord injury world. Including news, stories, reports and special offers especially relevant to the spinal cord injury community, The Voice gives you a chance to get and stay involved.

> When you join SIA as a member free of charge, you can sign up to The Voice by opting into emails. Join us and sign up now.

**JOIN US AND
SIGN UP NOW**



CAN YOU HELP OTHERS AFFECTED BY SPINAL CORD INJURY?



> [Complete our volunteering form](#)
[if you'd like to join as a volunteer](#)



> [Make a one-off or regular donation.](#)



> [Remember SIA in your will and help people with spinal cord injury for generations to come](#)



£14

could fund the cost of a phone call to one of SIA's support coordinators, providing practical advice as well as connecting them to SIA's network of support services.



£26

could help fund an hour-long counselling session for people struggling to cope with the mental and emotional impact of spinal cord injury.



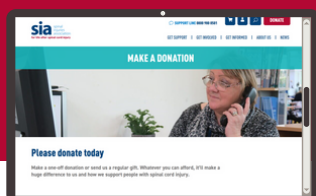
£106

could help cover the cost of a peer support session providing families with vital advice and support from the perspective of someone who has lived experience of spinal cord injury.

Help us change more lives

To make a donation call 01908 604191 (option 3), email fundraising@spinal.co.uk or click below

DONATE NOW



Payroll giving

A simple, tax-effective way to donate regularly. If you would like to find out more about payroll giving contact supportercare@spinal.co.uk.



JOIN OUR NETWORK

Want to be part of the SIA community, get exclusive access to networking opportunities and discounted entry to our events?

If you're a business or organisation working with people with spinal cord injury, find out more about joining our growing network.

Meet the team - partnerships

Our partnerships team work with our corporate supporters, trusted partners and business members:



[EMAIL ME](#)

Alison Hayward

partnerships manager

[E a.hayward@spinal.co.uk](mailto:a.hayward@spinal.co.uk)

[T 01908 732160](tel:01908732160)



[EMAIL ME](#)

Lady-Marie Dawson-Malcolm

partnerships coordinator

[E l.dawson-malcolm@spinal.co.uk](mailto:l.dawson-malcolm@spinal.co.uk)

[T 01908 732145](tel:01908732145)



[EMAIL ME](#)

Shannon Float

corporate fundraising officer

[E s.float@spinal.co.uk](mailto:s.float@spinal.co.uk)

[T 01908 732150](tel:01908732150)



[EMAIL ME](#)

Shani Cary

corporate development coordinator

[E s.cary@spinal.co.uk](mailto:s.cary@spinal.co.uk)

[T 01908 767505](tel:01908767505)



Spinal Injuries Association
SIA House, 2 Trueman Place, Milton Keynes, MK6 2HH

Tel: 01908 604 191

Freephone support line: 0800 980 0501

corporate@spinal.co.uk

spinal.co.uk



Registered with
**FUNDRAISING
REGULATOR**